



21 STATION ROAD

HAPPIER
BOLDER
FASTER
SMARTER

CAMBRIDGE

13,650 SQ FT OF GRADE A OFFICE SPACE



- Available April 2026
- Fifth floor fully let
- 13,650 sq ft of fully refurbished Grade A office space on the fourth floor.
- A redefined reception.



- 
1. Microsoft
2. Deloitte
3. Amazon
4. Birkett's
5. Mott MacDonald
6. Cambridge Innovation Capital
7. Apple Research
8. WeWork
9. AWS
10. Eversheds Sutherland
11. Fora
12. Common AI
13. Luminance
14. CuspAI
15. IQGeo
16. Five AI

Station Road is the premier commercial hub in Cambridge, renowned for hosting world-leading occupiers and fostering innovation.



Newly created
reception entrance



New LED Lighting



Fan coil air
conditioning



Refurbished Cat A
office space



EPC B (target)



5 car parking spaces
(One is disabled)



Remodelled end of trip
shower/change facilities

13,650 sq ft/1,268 sq m

All areas are NIA.

4



Not to scale. For identification purposes only.

Indicative Space Plan

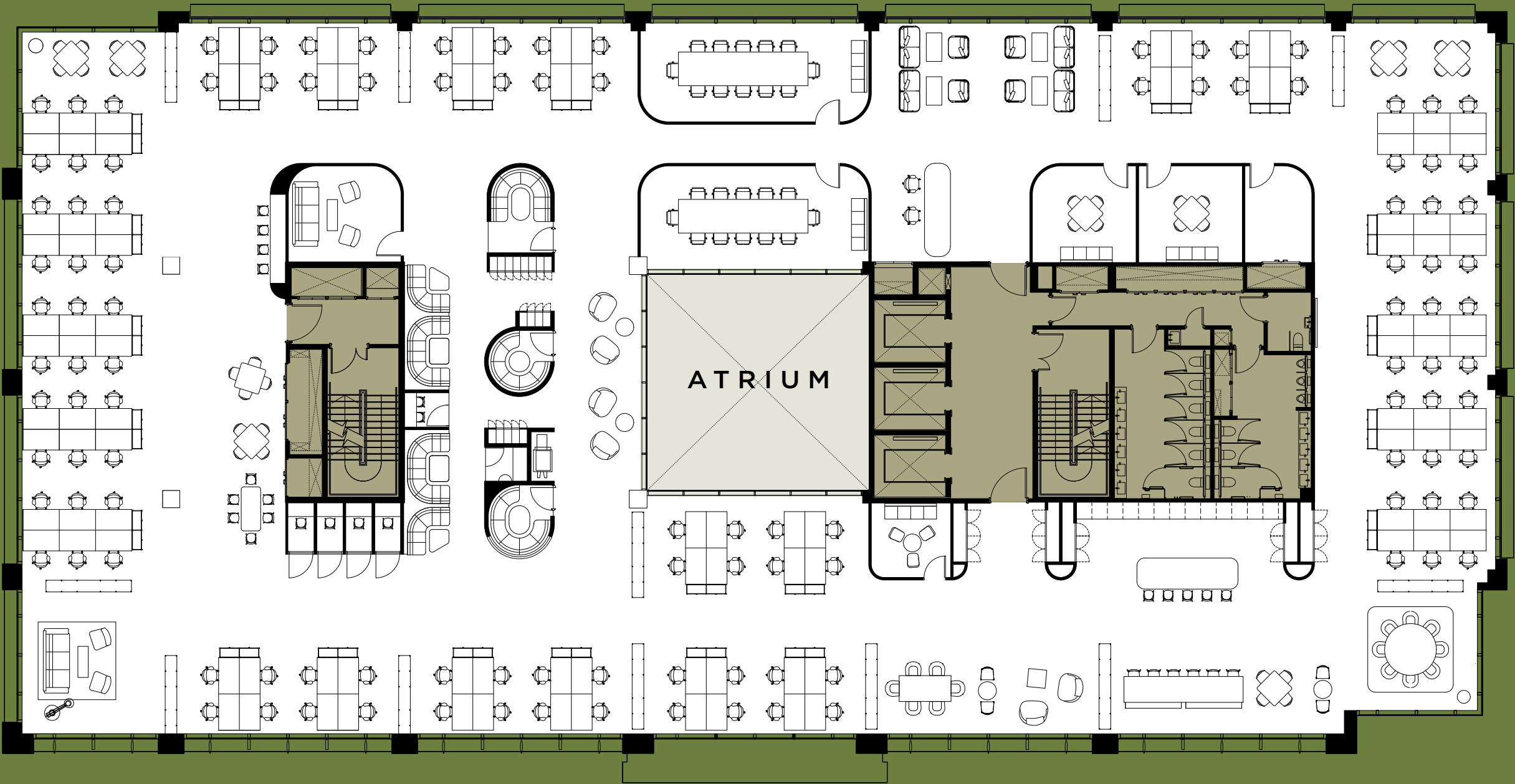
Efficient flexible space enables a range of space plans with views to the Botanic Garden and Cambridge skyline.



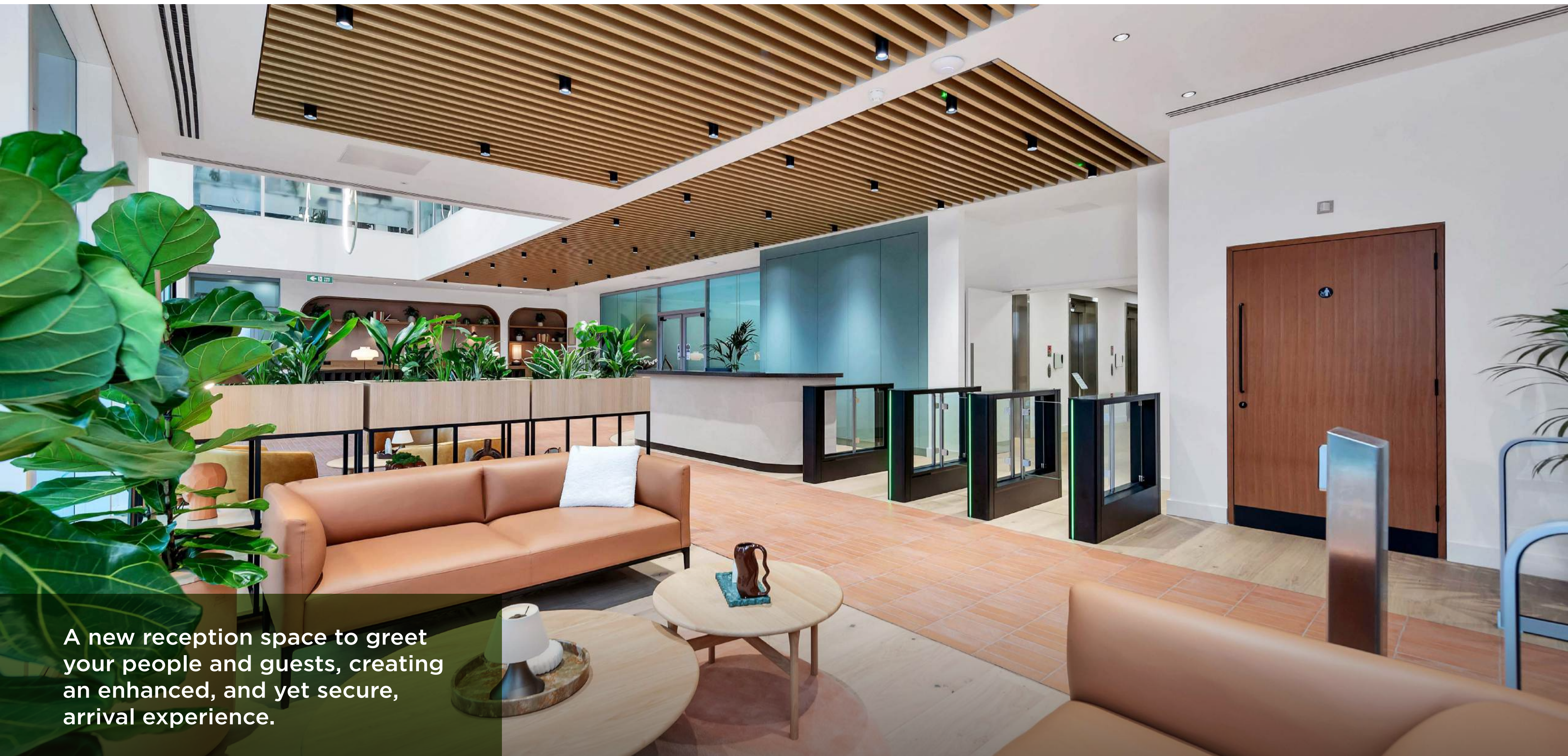
OCCUPANCY DATA

Workstations 116
Reception 2
Total headcount 118

Occupancy ratio
1:10.7 sq m

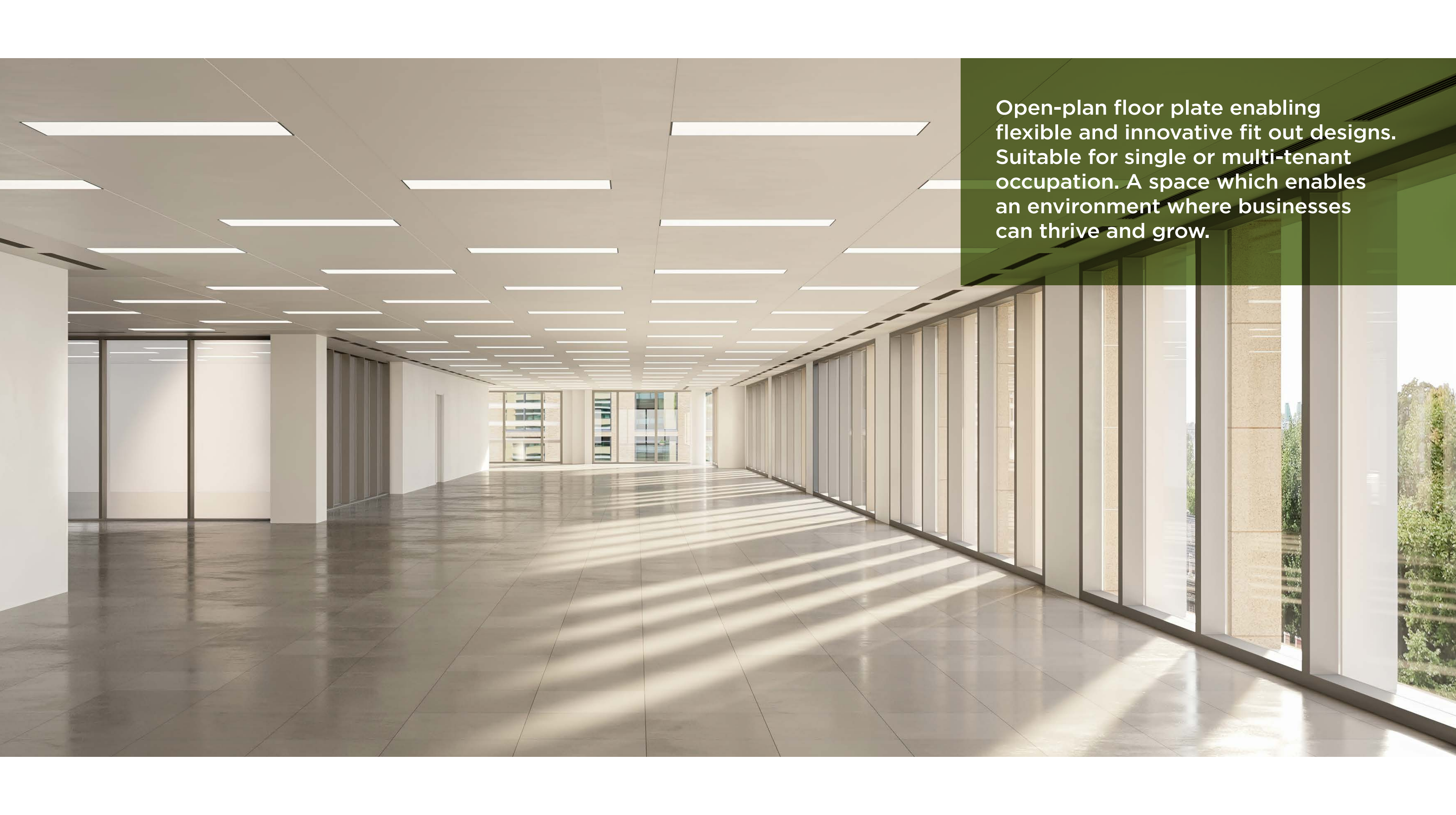


Not to scale. For identification purposes only.



A new reception space to greet your people and guests, creating an enhanced, and yet secure, arrival experience.





Open-plan floor plate enabling flexible and innovative fit out designs. Suitable for single or multi-tenant occupation. A space which enables an environment where businesses can thrive and grow.

Shopping, dining and leisure options couldn't be more convenient. Within a short walk you'll find a wealth of choice including GAIL's, Pret, M&S Food and Tesco, along with nearby hotels including The Clayton and Ibis.

HOTEL

- 1 The Varsity
- 2 The Clayton Hotel
- 3 University Arms Hotel
- 4 Ibis
- 5 Gonville Hotel
- 6 Travel Lodge
- 7 Premier Inn
- 8 F45 Training
- 9 David Loyd
- 10 Pure Gym
- 11 The Glassworks
- 12 Hotel Du Vin

RETAIL

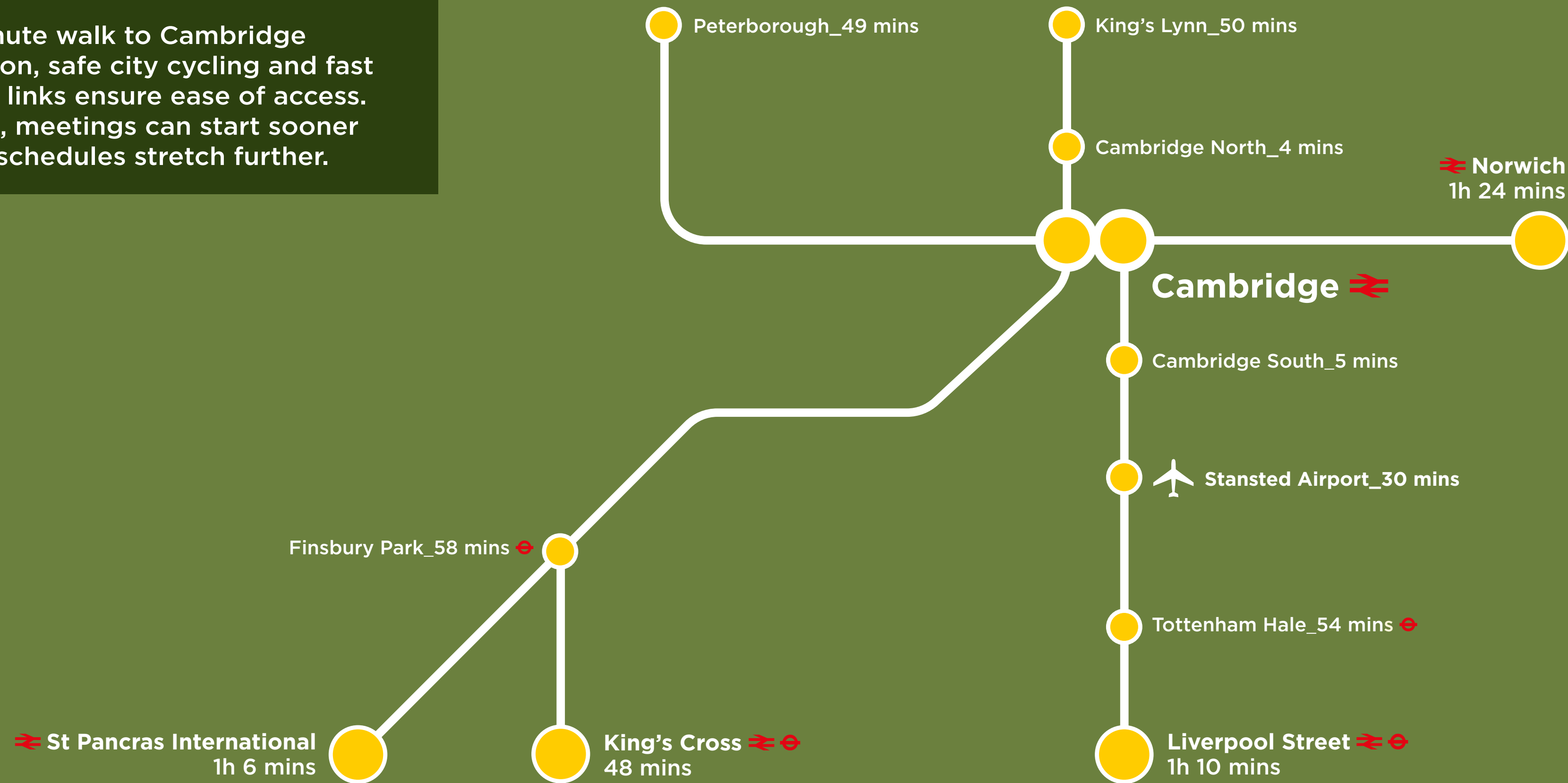
- 1 The Grand Arcade
- 2 Grafton Centre
- 3 John Lewis & Partners
- 4 The Bike Shed
- 5 Cambridge Upholsterer
- 6 Cam Cycles
- 7 Culinaris
- 8 The Hive
- 9 The Flower Project
- 10 Greg's Cycles
- 11 The Old Chemist Shop
- 12 life on a bike
- 13 Hilary's
- 14 Mill Road Butchers

FOOD & BEVERAGE

- 1 Tesco
- 2 M&S
- 3 Sainsburys
- 4 Wasabi
- 5 Pret
- 6 Gails
- 7 Juic' it up
- 8 Greggs
- 9 Bould Brothers
- 10 Norfolk Street Bakery
- 11 Slingers
- 12 Station Tavern
- 13 The Wine Rooms Cambridge
- 14 Cambridge Oven
- 15 Costa Coffee
- 16 Fin Boys
- 17 Tu Casa Tapas
- 18 Vanderlyle
- 19 Maurizio Dining & Co
- 20 Salisbury Arms
- 21 Samaan Restaurant
- 22 Dom's Coffee
- 23 Bedouin
- 24 Old Ticket Office
- 25 Fancett's
- 26 Devonshire Arms
- 27 White Swan
- 28 The Cambridge Blue
- 29 The Petersfield
- 30 Botany Foodie
- 31 Urban Larder
- 32 196 cocktail bar
- 33 Limoncello
- 34 La Maison du Steak
- 35 Hot numbers coffee
- 36 Buren
- 37 Tawa Kitchen
- 38 The Garden Kitchen
- 39 Mercado Central
- 40 Flat Iron
- 41 Dishoom
- 42 Browns
- 43 The Ivy
- 44 Smashburger
- 45 Six



1 minute walk to Cambridge Station, safe city cycling and fast road links ensure ease of access. Here, meetings can start sooner and schedules stretch further.



TEAM

For further information,
please contact:



Iain Keys
+44 (0) 7890 942 687
iain.keys@knightfrank.com

Tom Slater
+44 (0)7870 803 314
tom.slater@knightfrank.com

Harriet Willmott
+44 (0)7974 398 308
harriet.willmott@knightfrank.com



Jamie Green
+44 (0)77 7616 1534
jamie.green@dtre.com

Sam Cooper
+44 (0)78 8058 5950
sam.cooper@dtre.com

A DEVELOPMENT BY
RAILPEN

Misrepresentation Act 1967 and declaration Knight Frank and DTRE for themselves and for the vendor/lessor as agent for the vendor/lessor gives notice that: 1. We provide the information contained in these particulars for guidance to intending purchasers, licensees or any other third parties and they are for your general information only and will be used at your own risk. 2. We will use all reasonable endeavours to ensure the accuracy of information, however, we do not guarantee or warrant the accuracy or completeness, factual correctness or reliability of any information in the particulars (especially as the information may have been obtained from third parties) and do not accept any liability for any errors or omission including any inaccuracies or typographical errors. 3. Any interested purchasers, licensees or any other third parties should not view the information in the particulars as statements or representations of fact and should satisfy themselves that the facts and specific details in the particulars are correct and accurate especially in relation to floor areas and other measurements through inspection. January 2026.